

LINERDRAIN

PLASTIC FLOOR DRAIN FOR RENOVATION

Installation manual



Table of contents:

1 General

2 Safety

[2.1 General safety instructions and liabilities](#)

[2.2 Requirements to user training](#)

[2.3 Protective equipment](#)

3 Installation instructions and equipment

[3.1 Odour plate removal](#)

[3.2 Rust removal from old floor drain](#)

[3.3 Floor drain insert output roughening](#)

[3.4 Floor drain insert protection](#)

[3.5 Insert fitting](#)

[3.6 Insert installation](#)

[3.7 Floor drain line inversion](#)

[3.8 Liner cutting](#)

[3.9 Insert and old cast iron drain seam finishing](#)

[3.10 Odour trap installation](#)

4 Materials

[4.1 Floor drain insert](#)

[4.2 Spraycoat FC \(waterproofing paste\)](#)

[4.3 Pipe liner](#)

[4.4 Epoxy resin](#)

5 Tools

6 Waste management

7 Annexes

[7.1 Technical specifications](#)

[7.2 Safety data sheets](#)

1. General

Linerdrain is applicable for renovation of most common cast iron floor drains, without damaging the structures.

2. Safety

2.1 General safety instructions and liabilities

In general, the following occupational safety instructions and obligations apply to Linerdrain use:

- Compliance with general occupational safety requirements is mandatory. In addition, installation site-specific occupational safety and accident prevention rules and instructions must be followed.
- Tools must be used in accordance with their operating rules and safety regulations.

2.2. Requirements to user training

Persons working with Linerdrain must be trained to work with all materials and tools used in the course of Linerdrain installation.

2.3. Protective equipment

- Protective gloves
- Safety shoes
- Safety goggles
- Sealed working clothes
- Respiratory protection

3. Installation instructions

3.1 Odour plate removal

- Detach the odour plate completely, edges and all.



3.2 Rust removal from old floor drain

- Carefully remove rust from the old cast iron floor drain.



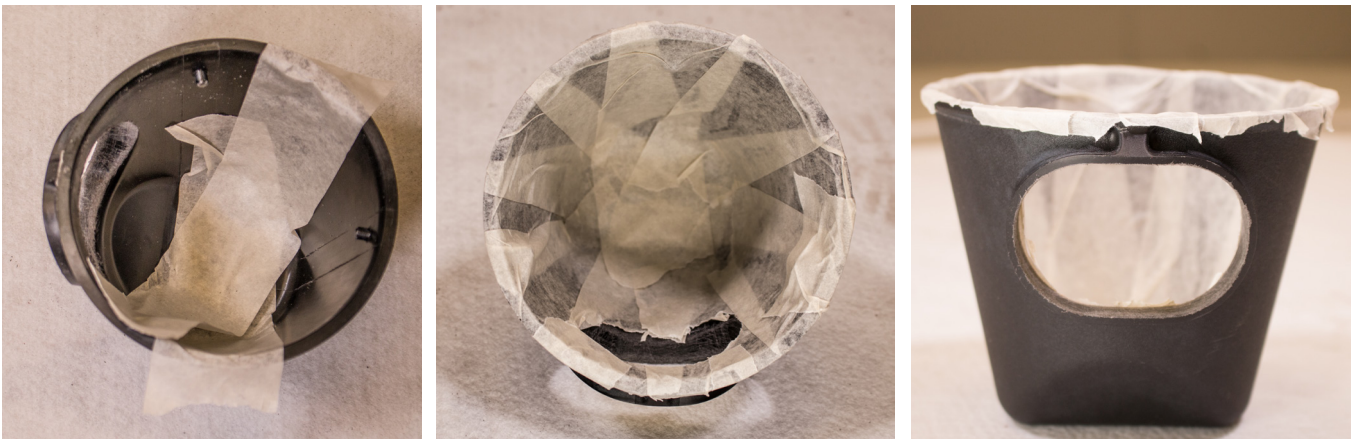
3.3 Floor drain insert output roughening

- Roughen the floor drain insert with sandpaper to improve adhesion of the lining



3.4 Floordrain insert protection

- Protect the Linerdrain insert by masking tape to prevent epoxy leaks inside the insert.



3.5 Insert fitting

- Check that the insert installed fits directly into the floor drain to be renovated. The insert should fit loosely into the existing cast iron drain.

3.6 Linerdrain installation

- Pour epoxy to the bottom of the existing floor drain using a two-component press, install the drain insert inside the existing cast iron floor drain so that the epoxy reaches the floor drain insert's adhesion surface. (Make sure the insert is at the right height and aligned with the mouth of the old drain.) [Photo 1]



Photo 1



Photo 2

3.7 Floor drain line inversion

- After the epoxy hardens and the insert becomes securely attached to the existing cast iron floor drain, the insert is ready for inversion.
- Measure the floor drain length using a sewer camera and cut the liner to the right size.
- Impregnate the liner with epoxy resin and compress the liner to the correct thickness.
- Carry out inversion of the liner through the drain insert into the sewer line and pressurize the lining.
- After hardening of the liner, fill the space between the old floor drain and the insert with epoxy to the top edge of the drain insert. [Photo 2]

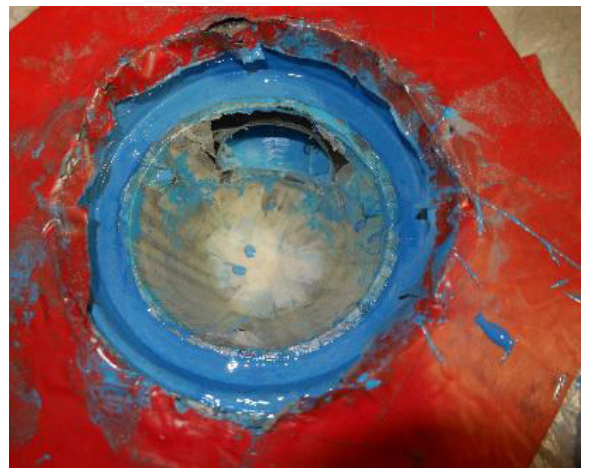
3.8 Liner cutting

- After the lining hardens, cut the liner to suit the insert inner edge and finish by grinding.
- Remember to check the resurfacing outcome by the sewer camera.



3.9 Insert and old cast iron drain seam finishing

- Finish the seam between the old drain and floor drain insert carefully.

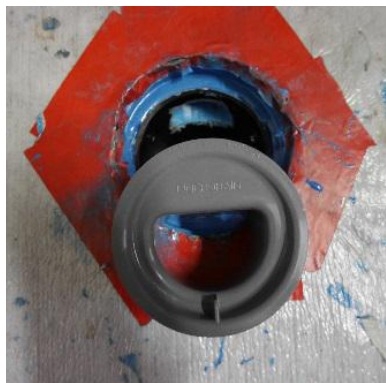


3.10 Odour trap installation

- Install the rubber seal in the odour trap furrow. Use lubricant for installation.



- Remove protection from inside the insert and install the odour trap by turning it clockwise. The odour trap is locked by the stoppers.



4. Materials

- 4.1 Drain insert
- 4.2 Spraycoat FC (waterproofing paste)
- 4.3 Pipe liner
- 4.4 Epoxy resin

5. Tools



Two-component press



Flexible pivot handpieces:
straight, 45°, 90°



Floordrain key



Grinding tools



Floordrain insert leveling tool



6. Waste management

- Waste disposal must be arranged in accordance with the manufacturer's instructions and statutory regulations and guidelines.
- Unused materials, cured epoxy mix, epoxy-impregnated cut pieces and cleaning means must be disposed of in compliance with applicable instructions.

7. Annexes

- Safety data sheets
- Technical specifications